



الغرابلي للأعمال الهندسية المتكاملة ش.م.م.  
Gharably Integrated Engineering Co. S.A.E.



الغرابلي للأعمال الهندسية المتكاملة ش.م.م.  
Gharably Integrated Engineering Co. S.A.E.

SINCE  
1912

**You Imagine ,  
We Build.**





الغرابلي للأعمال الهندسية المتكاملة ش.م.م.  
Gharably Integrated Engineering Co. S.A.E.

**Chairman & CEO**

Vice Chairman

Technical Managing Director

Financial Managing Director





الغرابلي للأعمال الهندسية المتكاملة ش.م.م.  
Gharably Integrated Engineering Co. S.A.E.



## Who we are

The roots started in 1912 and has been a leader through the years in the fabrication, erection, welding and testing of metal plate structures and related systems. Materials of construction include carbon steel, stainless steel, alloys, clad, aluminum and other metallic materials. Since 1948, company began the activities in the field of General Contracting/Construction Contractor.



القرايلى للذعمال الهندسية المتكاملة ش.م.م.  
Gharably Integrated Engineering Co. S.A.E.



# GENUINENESS RECORD

## GHARABLY INTEGRATED ENGINEERING COMPANY (EGYPT)





## GIECO SCOPE OF WORK

Design And Construction Of Marine Works,  
Ports, bridges, roads, highways, tunnels, railways,  
Airports, factories, water & Sewage, treatment Plants, Residential,  
Commercial & Industrial Buildings Including Mechanical,  
Electrical Works And Piling works.  
Fabricating Of heavy Steel products, storage Tanks And Pipelines.  
Manufacturing Of ready mixed Concrete & Concrete Masonry  
Products.

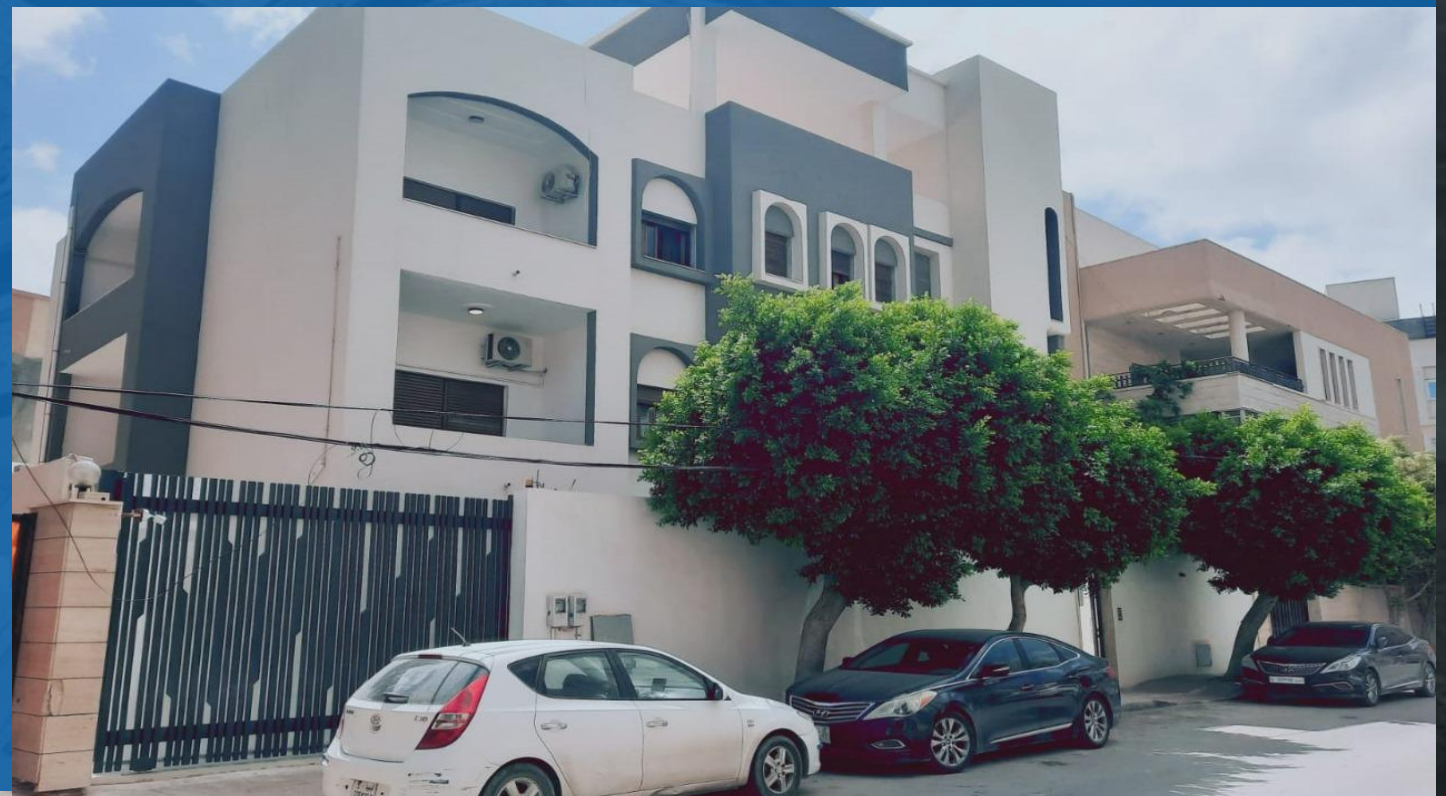




الغرابلي للأعمال الهندسية المتكاملة ش.م.م.  
Gharably Integrated Engineering Co. S.A.E.

## Offices

- GIECO's main office is based in Alexandria, Egypt. The company is also represented in Cairo.
- We Have Our Branch In Libya.
- Today, GIECO proudly employs more than 20000 highly qualified team members who are integral to the success of the company as a whole.
- GIECO owns all the necessary equipment required for all types of assigned projects. Fabrication activities are performed in our fully equipped fabrication shops in Alexandria and Borg El Arab





الغرابلي للأعمال الهندسية المتكاملة ش.م.م.  
Gharably Integrated Engineering Co. S.A.E.

## Mr Ibrahim El Gharably

Today in both the private and public sector, Gharably Group (GG) plays a massive role in the national economy.

GG is the holding company for:

- Gharably Integrated Engineering Company (GIECO)
- Gharably Engineering Company (GECO)
- Gharably for Trade and Marketing Company (GTMCO)
- Gharably for Livestock & Agriculture Development Company (GLADCO)

Both GIECO and GECO, as EPC Contractors, have their construction projects all around Egypt with a massive turn-over in 2018 of about one billion US dollars, and all the thanks go to God and our esteemed clients.

Our expertise ranges from engineering to architecture and from design to planning and project management.

Having great experience in turn-key projects, we serve in the procurement, engineering, and construction fields, where we have been working hard and carefully for more than 70 years.

Moreover, we have our steel workshops in Alexandria for a monthly product that exceeds 1000 Ton per month and more depending on the type of steel.





الغرابلي للأعمال الهندسية المتكاملة ش.م.م.  
Gharably Integrated Engineering Co. S.A.E.

## Eng. Moatasem ElGharably

I would like to thank all our team, directors and employees, who worked hard to uphold the reputation of our esteemed company, which was positively reflected in the achievement of our goals in spite of the confronted challenges, past years, and succeeded to win the execution of mega projects. Due to the faithful efforts and persistence of our team, GIECO succeeded to gain the appreciation of our clients, and won several projects bids in addition to Work Authorizations.

The commitment with the international standards of quality, environment, health and safety is on the top of our priorities. GIECO reinforces its efforts to communicate with Foreign Investors and Egyptian Clients to strengthen mutual cooperation through taking part in executing engineering and construction projects.

GIECO team are the main factor of boosting GIECO's business and are responsible for upgrading the work performance of the company up to the international levels.

This target is fulfilled through permanent training of manpower on the local and international levels.

I extend my thanks, appreciation and gratitude to our clients /suppliers inside/outside Egypt for their trust, which will remain an incentive to exercise more efforts to maintain their trust and their continuous support.





القراييل للأعمال الهندسية المتكاملة ش.م.م.  
Gharably Integrated Engineering Co., S.A.E.



## GIECO WORKSHOP

GIECO PRODUCES ABOUT 3000 TONS/MONTH OF STEELWORKS FROM STEELWORKS OR VARIOUS METAL SECTORS OF ORDINARY CARBON STEEL OR STAINLESS STEEL.

## GIECO NEW WORKSHOP "UNDER CONSTRUCTION"

- Land area 180,000 m<sup>2</sup> .
  - Three main workshops in 30,000 m<sup>2</sup>.
1. Heavy steel workshop.
  2. Medium steel workshop.
  3. Special materials workshop .



الغرابلي للأعمال الهندسية المتكاملة ش.م.م.  
Gharably Integrated Engineering Co. S.A.E.

## Our Sectors :

---



**Marine, coastal, and  
port construction  
work**



**Infrastructure**



**Buildings and  
Commercial**



**Industrial**

## Marine, coastal, and port construction work

GIECO recent challenge and success is the Marine Ports, where we work hard and carefully taking into weather and sea movements.

Consideration every minor change in experience allow us to gain a reputation GIECO many years of construction in the marine ports construction field GIECO execute many type of Quay as Combi -Wall, Gravity Block Wall and Diaphragm Wall.

GIECO is committed to the highest Standards for Quality. GIECO places the highest priority on safety of our workers and the protection of the environment and minimize the impact of our operations on the eco-systems surrounding our activities.

Gieco is able to supply more than 15000 tons Quarries per day GIECO Constructed 2200m Breakwater within 12monthswith a depth(-14.50m)



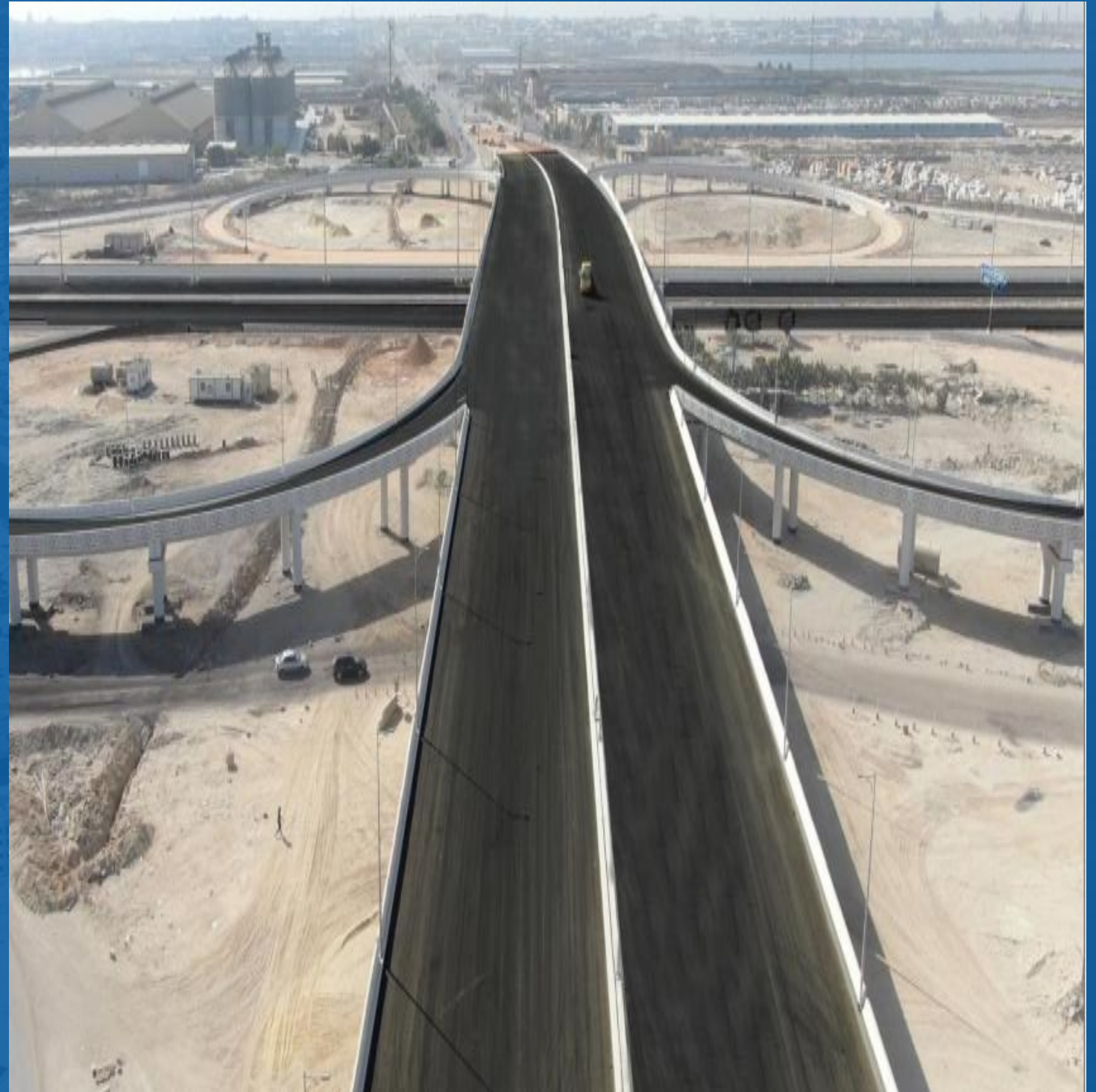


الغرابلي للأعمال الهندسية المتكاملة ش.م.م.  
Gharably Integrated Engineering Co. S.A.E.

## Infrastructure

GIECO is committed to planning, steel fabrication, concrete precast, installation and civil works meeting the transportation authority programs.

GIECO workshops in Borg Al Arab succeeded in fabricating thousands of tons of heavy steel required for the Bridges Projects.





## Roads and Bridges

GIECO valuing roads and bridges as transport is a vital element of enabling a function in economy.

Delivering an appropriate and sustainable transportation network is the most exciting challenge in Egypt today. Hence, GIECO is honored to participate in the roads.

## Airports

GIECO offers a wide range of innovative products and fit for purpose construction solutions for all areas of the airport complex – including tunnels, ramps, runways, parking structures and terminal buildings.

GIECO combines historical performance and advanced technology for the construction of smooth safe airport operations

## Water Treatment Plants

Design, supply, installation and commissioning of waste water treatment plants.





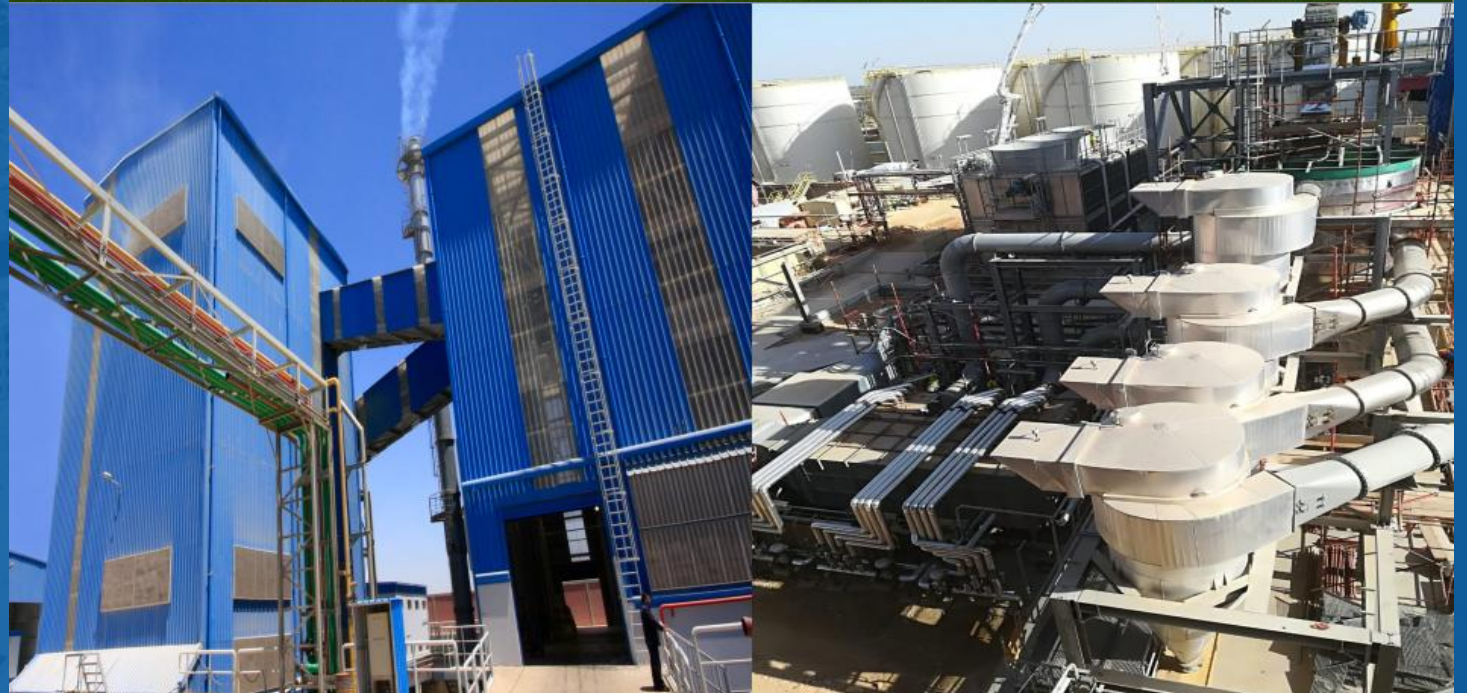
## Buildings & Commercial

GIECO civil projects include megaprojects in high-rise buildings and governmental buildings complexes.

GIECO chooses the right project delivery strategy, managing risks, and developing specific policies and procedures to ensure top-quality project completion on time within budget and without any strategic misrepresentation.

## Industrial

GIECO is pioneer in the supply, erection, fabrication, installation, and operation for many different industries.





الغرابلي للأعمال الهندسية المتكاملة ش.م.م.  
Gharably Integrated Engineering Co. S.A.E.

## Mission

Deliver innovative and sustainable engineering solutions empowering Libya's energy and infrastructure sectors, fostering local development and global partnerships.



## Vision

Become Libya's leading engineering partner, recognized for excellence, integrity, and transformative project delivery driving regional prosperity.

## Values

Commit to Integrity, Innovation, Collaboration, and Sustainability in all projects, emphasizing ethical practices, cutting-edge technology, strong partnerships, and environmental responsibility.



الغرابلي للأعمال الهندسية المتكاملة ش.م.م.  
Gharably Integrated Engineering Co. S.A.E.

# Building Impact: Our Extensive Multi-Project Footprint Across Libya

---

Since its establishment, Al-Gharably Integrated Engineering Company Works has positioned itself as a leading engineering, procurement, and construction (EPC) contractor, renowned for its extensive expertise and proven ability to deliver large-scale projects with the highest standards of quality and professionalism.

The company has successfully executed a range of strategic projects across various Libyan cities — including infrastructure, ports, roads, public utilities, and industrial developments which reflecting its commitment to supporting Libya's reconstruction and development efforts and reinforcing its role as a trusted partner in regional growth and progress.



الغرابلي للأعمال الهندسية المتكاملة ش.م.م.  
Gharably Integrated Engineering Co. S.A.E.

# Strategic Importance of our Projects in Libya is this right

Our company's projects support Libya's development vision while advancing global strategic objectives

Significant opportunities in line with the goals of modernization and the diversification of development sources in Libya.



Libya's strategic location and abundant natural resources create a vital market for sustainable growth

Economic growth is being driven by the revitalization of all state sectors and government-led infrastructure initiatives aimed at raising the standard of living for Libyan citizens.



الغرابلي للأعمال الهندسية المتكاملة ش.م.م.  
Gharably Integrated Engineering Co. S.A.E.

# Chronological Timeline: Evolution of Our Projects in Libya

Key milestones shaping our strategic growth and diversified portfolio

## • Stage 1

### Entry into Libya

Since entering Libya to undertake developmental projects, Al-Gharably Integrated Engineering Company Works has experienced rapid growth in the scope of its operations.

## • Stage 2

### First Major Project

Within just three months of launching its first project, the company was awarded five additional projects simultaneously, a clear testament to its strong capabilities and proven efficiency in delivering high-quality work on schedule

## • Stage 3

### Expansion into New Sectors

In less than a year, its portfolio expanded to twelve projects, reflecting the company's exceptional performance and unwavering commitment to excellence in every aspect of project execution.



الغرابلي للأعمال الهندسية المتكاملة ش.م.م.  
Gharably Integrated Engineering Co. S.A.E.

# Key Projects Across Libya's Diverse Sectors

We have implemented 12 projects in Libya as follows:

NO	PROJECT NAME	Location	Sector	Cost	Status	Client
1	Development and construction of the coastal road (2.1 km) and the promenade (1.5 km)	Derna	Marine , roads and landscape	21.705.468	ongoing	Libya Reconstruction and Development Fund
2	Construction Project for Vehicle Bridge No. 5 – culvert Area, Derna 1	Derna	Steel , construction and roads	10.553.037	completed	Libya Reconstruction and Development Fund
3	Construction Project for Vehicle Bridge No. 6 – culvert Area, Derna 2	Derna	Steel , construction and roads	9.393.346	completed	Libya Reconstruction and Development Fund
4	Development and execution of the Wadi Derna project, including the adjacent roadways in Derna city.	Derna	Construction , roads and landscape	27.948.957	ongoing	Libya Reconstruction and Development Fund
5	Bridge 7 (Al-Sahabah) Construction Project	Derna	Bridges and roads	9.693.084	completed	Libya Reconstruction and Development Fund



الغرابلي للأعمال الهندسية المتكاملة ش.م.م.  
Gharably Integrated Engineering Co. S.A.E.

# Key Projects Across Libya's Diverse Sectors

We have implemented 11 projects in Libya as follows:

NO	PROJECT NAME	Location	Sector	Cost	Status	Client
6	Bridge at the intersection near Al-Zawiya Police Station in the city of Al-Bayda.	Al-Bayda	Bridges and roads	8.474.536	Completed	Libya Reconstruction and Development Fund
7	Project for the Expansion to a Dual Carriageway of the Al-Bayda–Messa Road and Al-Orouba Road – Total Length: 12 km	Al-Bayda	Roads and landscape	40.000.000	ongoing	Libya Reconstruction and Development Fund
8	Residential Complex – Benghazi – Phase One	Benghazi	Residential, landscape , roads and infrastructure	-	InProgress	ESS
9	Construction of 8 culvert bridge structures along the Derna Corniche Road	Derna	Construction	6.315.833	In progress	Libya Reconstruction and Development Fund
10	Heavy Transport Bridge – Misrata	Misrata	Bridges and roads	-	InProgress	Transportation Authority
11	Intersection Bridge Construction Project at the College of Medical Technology in Misrata	Misrata	Bridges and roads	32.963.181	InProgress	Transportation Authority



الغرابلي للأعمال الهندسية المتكاملة ش.م.م.  
Gharably Integrated Engineering Co. S.A.E.

## Development and construction of the coastal road (2.1 km) and the promenade (1.5 km)

**Owner:** Libya Reconstruction and Development Fund.

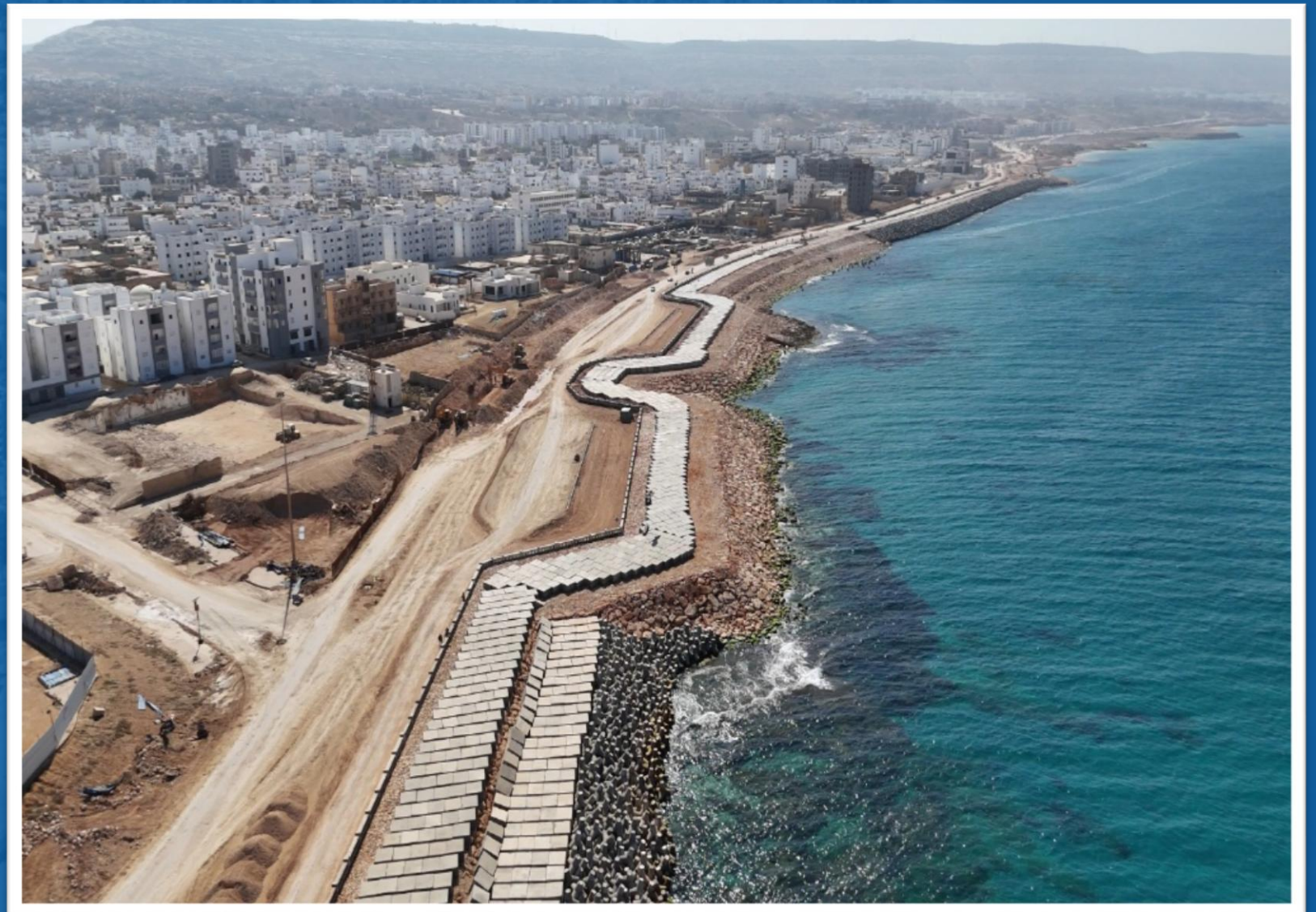
**Main contractor:** Neom.

**Consultant:** Al-Raed Consulting

**Project duration :** Jul. 2024 to mar 2025.

**About the project :**

Development and design the Expansion of the Derna Corniche and Tourist Promenade (6 km), including Marine Protection Works for the Wadi Entrance Area and Derna Port (1 km).





الغرابلي للأعمال الهندسية المتكاملة ش.م.م.  
Gharably Integrated Engineering Co. S.A.E.

# Development and construction of the coastal road (2.1 km) and the promenade (1.5 km)



Before Execution



Before Execution



الغرابلي للأعمال الهندسية المتكاملة ش.م.م.  
Gharably Integrated Engineering Co. S.A.E.

# Development and construction of the coastal road (2.1 km) and the promenade (1.5 km)



During Execution

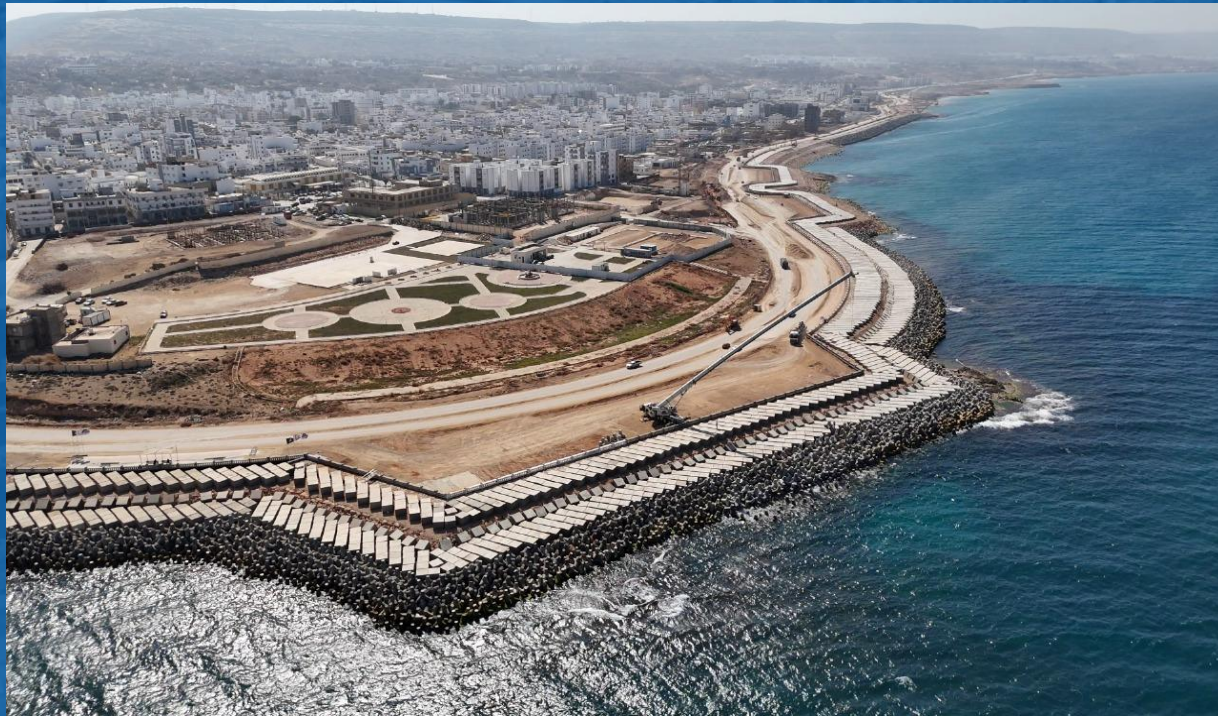


During Execution



الغرابلي للأعمال الهندسية المتكاملة ش.م.م.  
Gharably Integrated Engineering Co. S.A.E.

# Development and construction of the coastal road (2.1 km) and the promenade (1.5 km)



After Execution



After Execution

# Construction Project for Vehicle Bridge No. 5&6 – culvert Area, Derna

**Owner:** Libya Reconstruction and Development Fund.

**Main contractor:** Neom.

**Consultant:** Al-Raed Consulting.

**Project duration :** May. 2024 to May 2025.

**About the project :**

**1- Bridge 5 :** The connection between the Eastern area (Al-Dibani Street) and the Western area (Al-Fath Street) through a bridge with a length of 86.50 meters and a width of 24 meters.

**2- Bridge 6:** Connecting the Eastern and Western areas (extension of Al-Bahar Street) through a bridge with a length of 78 meters and a width of 24 meters.





الغرابلي للأعمال الهندسية المتكاملة ش.م.م.  
Gharably Integrated Engineering Co. S.A.E.

# Construction Project for Vehicle Bridge No. 5&6 – culvert Area, Derna



Before Execution



Before Execution



الغرابلي للأعمال الهندسية المتكاملة ش.م.م.  
Gharably Integrated Engineering Co. S.A.E.

# Construction Project for Vehicle Bridge No. 5&6 – culvert Area, Derna



During Execution



During Execution

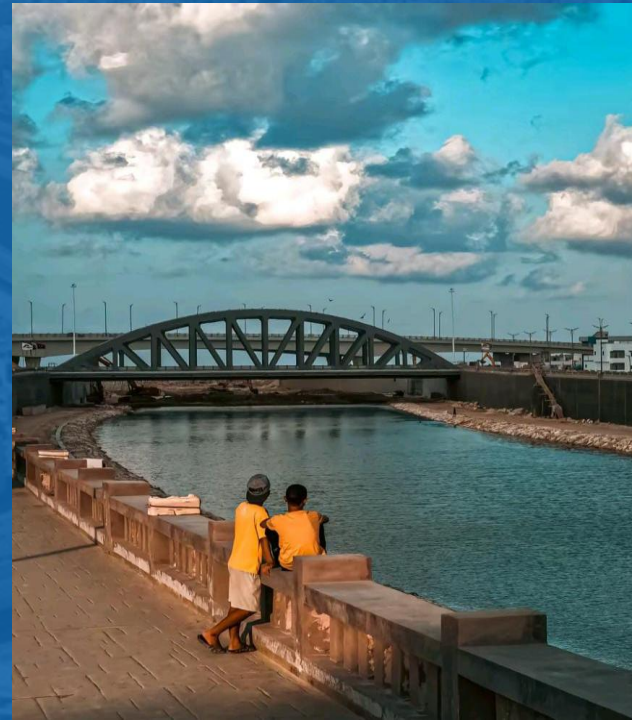


الغرابلي للأعمال الهندسية المتكاملة ش.م.م.  
Gharably Integrated Engineering Co. S.A.E.

# Construction Project for Vehicle Bridge No. 5&6 – culvert Area, Derna



After Execution



After Execution



After Execution



الغرابلي للأعمال الهندسية المتكاملة ش.م.م.  
Gharably Integrated Engineering Co. S.A.E.

## Development and execution of the Wadi Derna project, including the adjacent roadways in Derna city.

**Owner:** Libya Reconstruction and Development Fund.

**Main contractor:** Neom.

**Consultant:** Al-Raed Consulting.

**Project duration :** Aug. 2024 to Present.

**Progress rate :** 80%.

**About the project :**

- Construction of a water channel with a length of 1,250 meters and a width of 75 meters, with concrete walls 8 meters high, to discharge floodwaters from the city of Derna into the sea.
- Main road works on both sides of the valley, with 2 lanes in each direction.
- Service road works with 2 lanes in each direction on each side.





الغرابلي للأعمال الهندسية المتكاملة ش.م.م.  
Gharably Integrated Engineering Co. S.A.E.

# Development and execution of the Wadi Derna project, including the adjacent roadways in Derna city.



Before Execution



Before Execution



الغرابلي للأعمال الهندسية المتكاملة ش.م.م.  
Gharably Integrated Engineering Co. S.A.E.

# Construction Project for Vehicle Bridge No. 5&6 – culvert Area, Derna



During Execution



During Execution



الغرابلي للأعمال الهندسية المتكاملة ش.م.م.  
Gharably Integrated Engineering Co. S.A.E.

# Construction Project for Vehicle Bridge No. 5&6 – culvert Area, Derna



After Execution



After Execution

## Bridge 7 (Al-Sahabah) Construction Project

**Owner:** Libya Reconstruction and Development Fund.

**Main contractor:** Neom.

**Consultant:** Al-Raed Consulting.

**Project duration :** Jul. 2024 to Mar. 2025.

### About the project :

-The bridge is 450 meters long and 22 meters wide (11 meters for each direction).

-The structural system consists of box-girder slabs 175 meters long, slabs on piles for the approach and exit 150 meters long, and retaining wall ramps 125 meters long.

The project includes 11,000 m<sup>3</sup> of concrete and 3,500 tons of reinforcement steel.





الغرابلي للأعمال الهندسية المتكاملة ش.م.م.  
Gharably Integrated Engineering Co. S.A.E.

# Bridge 7 (Al-Sahabah) Construction Project



Before Execution



Before Execution



الغرابلي للأعمال الهندسية المتكاملة ش.م.م.  
Gharably Integrated Engineering Co. S.A.E.

# Bridge 7 (Al-Sahabah) Construction Project



During Execution



During Execution



During Execution



الغرابلي للأعمال الهندسية المتكاملة ش.م.م.  
Gharably Integrated Engineering Co. S.A.E.

# Bridge 7 (Al-Sahabah) Construction Project



After Execution



After Execution



الغرابلي للأعمال الهندسية المتكاملة ش.م.م.  
Gharably Integrated Engineering Co. S.A.E.

## Bridge at the intersection near Al-Zawiya Police Station in the city of Al-Bayda.

**Owner:** Libya Reconstruction and Development Fund.

**Main contractor:** Neom.

**Consultant:** Al-Raed Consulting.

**Project duration :** Jul. 2024 to Jul. 2025.

**About the project :**

-The bridge, with a length of 500 meters and a width of 18 meters, consists of piles, foundations, columns, frames, piers, precast beams, upper and transitional slabs, and includes two lanes in each direction.





الغرابلي للأعمال الهندسية المتكاملة ش.م.م.  
Gharably Integrated Engineering Co. S.A.E.

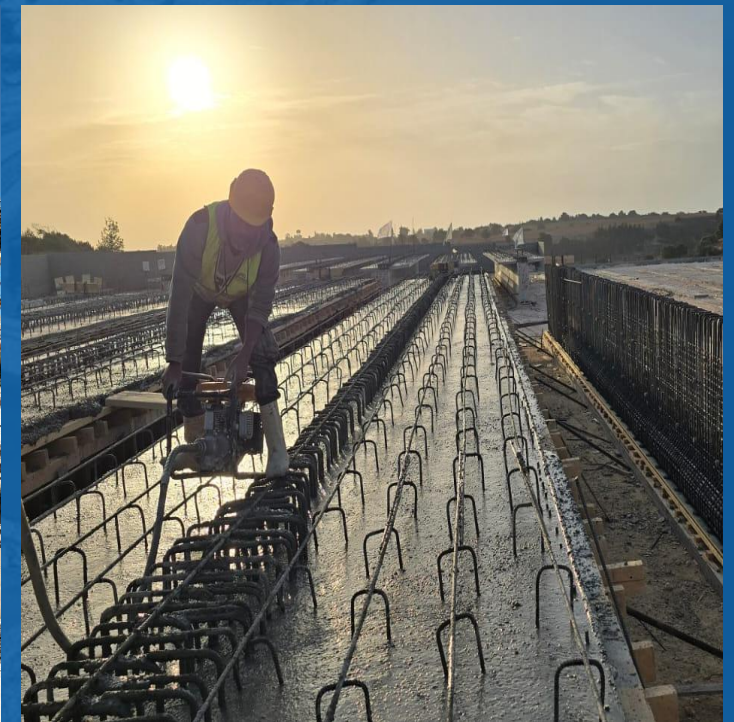
# Bridge at the intersection near Al-Zawiya Police Station in the city of Al-Bayda.



During Execution



During Execution



During Execution



الغرابلي للأعمال الهندسية المتكاملة ش.م.م.  
Gharably Integrated Engineering Co. S.A.E.

# Bridge at the intersection near Al-Zawiya Police Station in the city of Al-Bayda.



After Execution



After Execution



الغرابلي للأعمال الهندسية المتكاملة ش.م.م.  
Gharably Integrated Engineering Co. S.A.E.

## Project for the Expansion to a Dual Carriageway of the Al-Bayda– Messa Road and Al-Orouba Road – Total Length: 12 km

**Owner:** Libya Reconstruction and  
Development Fund.

**Main contractor:** Neom.

**Consultant:** Al-Raed Consulting. **Project  
duration :** Aug. 2024 to Present

**Progress rate :** 25%.

**About the project :**

-The Al-Oruba and Al-Bayda–Messa  
Road extends for 12 kilometers with a  
width of 25 meters, consisting of three  
lanes in each direction with a lane width  
of 3.65 meters.

The two directions are separated by a  
central New Jersey barrier, and the project  
includes seven culverts as civil structures,  
in addition to electrical works, storm  
water drainage, and sewage systems.





الغرابلي للأعمال الهندسية المتكاملة ش.م.م.  
Gharably Integrated Engineering Co. S.A.E.

# Project for the Expansion to a Dual Carriageway of the Al-Bayda– Messa Road and Al-Orouba Road – Total Length: 12 km



Before Execution



Before Execution



الغرابلي للأعمال الهندسية المتكاملة ش.م.م.  
Gharably Integrated Engineering Co. S.A.E.

# Project for the Expansion to a Dual Carriageway of the Al-Bayda– Messa Road and Al-Orouba Road – Total Length: 12 km



During Execution



During Execution



During Execution



الغرابلي للأعمال الهندسية المتكاملة ش.م.م.  
Gharably Integrated Engineering Co. S.A.E.

## Residential Complex – Benghazi – Phase One

**Owner:** ESS.

**Consultant:** Talent Consulting.

**Project duration :** Sep. 2024 to Present

**Progress rate :** 5 %.

**About the project :**

-Construction works of an integrated tourist resort on a total area of 2,084,850 m<sup>2</sup>, including a built-up area of 689,850 m<sup>2</sup>. The project comprises seven tourist resorts, a commercial mall, a distinctive residential district, as well as areas for schools, restaurants, sports facilities, and cultural centers. It is considered the first of its kind on Libyan soil.





الغرابلي للأعمال الهندسية المتكاملة ش.م.م.  
Gharably Integrated Engineering Co. S.A.E.

# Residential Complex – Benghazi – Phase One



Before Execution



Before Execution



الغرابلي للأعمال الهندسية المتكاملة ش.م.م.  
Gharably Integrated Engineering Co. S.A.E.

# Residential Complex – Benghazi – Phase One



During Execution



During Execution



الغرابلي للأعمال الهندسية المتكاملة ش.م.م.  
Gharably Integrated Engineering Co. S.A.E.

# Construction of 8 culvert bridge structures along the Derna Corniche Road

**Owner:** Libya Reconstruction and Development Fund.

**Main contractor:** Neom.

**Consultant:** Al-Raed Consulting.

**Project duration :** Sep. 2025 to Present

**Progress rate :** 10 %.

**About the project :**

-new construction for 8 culverts on coastal roads





الغرابلي للأعمال الهندسية المتكاملة ش.م.م.  
Gharably Integrated Engineering Co. S.A.E.

# Construction of 8 culvert bridge structures along the Derna Corniche Road



During Execution



During Execution



الغرابلي للأعمال الهندسية المتكاملة ش.م.م.  
Gharably Integrated Engineering Co. S.A.E.

# Partners Of Success



الجهاز الوطني للتنمية



الغرابلي للأعمال الهندسية المتكاملة ش.م.م.  
Gharably Integrated Engineering Co. S.A.E.

56 Mohamed Fawzi Moaz St., Smouha  
Heights, Alexandria, Egypt.

Tel.: (203) 4203665  
Fax: (203) 4202639

E-mail: [info@gharably.com](mailto:info@gharably.com)  
[gharably@gharably.com](mailto:gharably@gharably.com)

